

# The United States Reference Manual

## The 2 Cents Design Elements, Part 1

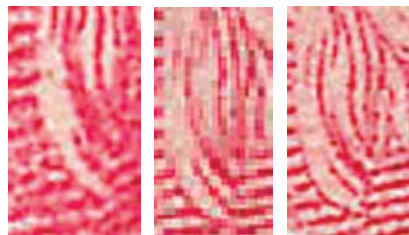
by John F. Dunn

Having covered the nine different 2¢ Types (I, Ia, II, III, IV, V, Va, VI, and VII) individually by Type, we will now wrap up the 2¢ section of the Manual by comparing the various types by characteristics. Taking those characteristics by the letters assigned in our study by Type, we will start with characteristic a, the shading lines in front of the lock of hair to the left of Washington's ear.



Shown here is the Type I shading, with little joining of the shading line or only slight, broken, joining.

Then, running left to right, we see the hair shading lines for those Types for which this shading line is an identifying characteristic.



Ia II III

Type Ia: The shading lines in front of the lock of hair to the left of Washington's ear are joined.

Type II: The horizontal shading lines in front of the lock of hair to the left of Washington's ear are joined by a vertical line that is stronger than on Ia stamps.

Type III: The shading lines in front of the lock of hair to the left of Washington's ear are joined (different from Type I, similar to Type II, but joining at least five horizontal shading lines, which is more than with Type II and is peculiar to the Type III design).

Type IV: This shading line is not an identifying characteristic for this Type.

Type V: This shading line is not an identifying characteristic for this Type.

Type Va: This shading line is not an identifying characteristic for this Type.

Type VI: This shading line is not an identifying characteristic for this Type.

Type VII: This shading line is not an identifying characteristic for this Type.

The second design elements that can be used as an identifier is the toga button on the toga rope. On Type I, shown here, it has a faint outline.



Then, running left to right, top row first, we see:

Type Ia: The toga button on the toga rope has a strong outline.

Type II: The toga button on the toga rope has a stronger outline than Type I, but not as strong as on Type Ia.

Type II: The toga button on the toga rope has a strong outline (similar to Type II, different from Type I).

Type III: The toga button on the toga rope has a strong outline (similar to Type II, different from Type I).

Type IV: The shading lines in the toga button form a ID. This is a primary determinant for Type IV.

Type V: This is not an identifying characteristic for this Type, except that if it has five vertical lines, it is not a Type IV (see above).

Type Va: This is not an identifying characteristic for this Type, except that if it has five vertical lines, it is not a Type IV (see above).

Type VI: This is not an identifying characteristic for this Type, except that if it has five vertical lines, it is not a Type IV (see above).

Type VII: This is not an identifying characteristic for this Type, except that if it has five vertical lines, it is not a Type IV (see above).



Ia II III IV



V Va VI VII

File page: 1.0406.0.120.119  
08/01/12

[Click here to order the complete "Telling Them Apart" Washington-Franklin Heads Study.](#)